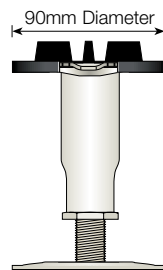
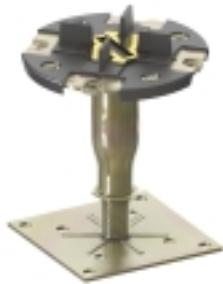


# Data Sheet: Pedestals

These pedestals are for use with the full range of Kingspan raised access flooring systems. All pedestals incorporate the following features:-

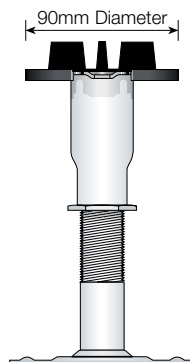
- All zinc plated steel construction unless otherwise stated
- Pre assembled to minimise installation time
- Locking nut to ensure that once adjusted and locked there is no movement in the pedestal head
- All steel construction ensures that good electrical continuity is maintained
- Wide range of finished floor heights can be catered for using standard pedestals; 50 to 1200mm
- Wide adjustment range which minimises the number of different pedestal heights required
- Pedestal head caps provide positive panel location whilst maintaining electrical continuity to the pedestal baseplate where earth where earth connections can be provided



### Europed II

This all steel pedestal fully complies with the requirements of BS EN 12825 and is used for finished floor heights from 60mm to 380mm.

The pedestal design utilises a 90mm diameter head which allows the use of standard plastic head caps. The baseplate is nominally 80mm square and includes provision for the use of mechanical fixing to the sub-floor in addition to the use of pedestal adhesive if required.

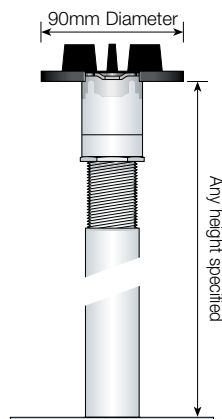


### Alpha V pedestal

This all steel pedestal fully complies with up to the heavy grade requirements of the PSA MOB PF2 PS/SPU specification and is used for finished floor heights from 50mm to 600mm.

The pedestal design utilises a 90mm diameter head which allows the use of standard plastic head caps. The baseplate is 100mm square and includes provision for the use of mechanical fixing to the sub-floor in addition to the use of pedestal adhesive if required.

The pedestal head design allows for the use of snap-in and bolt-on stringers if required.



### Alpha III pedestal

This all steel pedestal fully complies with up to the extra heavy grade requirements of the PSA MOB PF2 PS/SPU specification and is used for finished floor heights above 600mm.

The pedestal design utilises a 90mm diameter head which allows the use of standard plastic head caps. The baseplate is 120mm square and includes provision for the use of mechanical fixing to the sub-floor in addition to the use of pedestal adhesive if required.

The pedestal head design allows for the use of snap-in and bolt-on stringers if required.

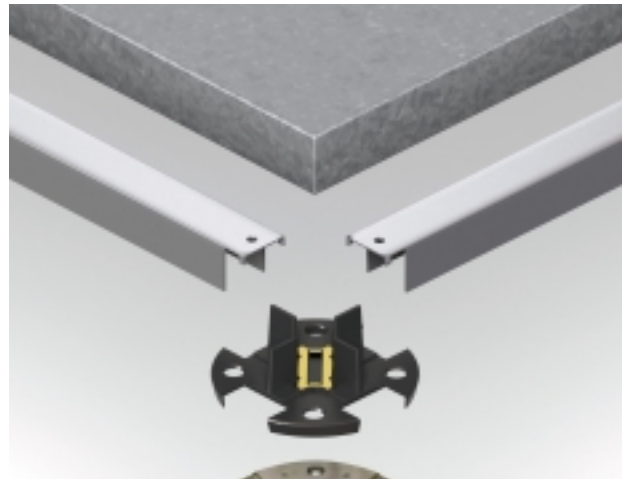
# Data Sheet: Pedestals

## Recommended Pedestal Selection

Pedestal type	Specification	Use with the following panels	Finished floor heights without stringers	Finished floor heights with stringers
Europed II	BSEN 12825	D-Lock 30, D-Lock 38 RG3 FDEB1 TL3 D3	73mm to 380mm 65mm to 380mm 68mm to 380mm 60mm to 375mm 65mm to 380mm	- - - - -
Alpha V	PSA MOB PF2 PS/SPU	Diamond, RLG, RMG, DRF TorLock FDEB 4 & FDEB 6 FDEB 30 FDEB 38	55mm to 600mm 50mm to 600mm 57mm to 600mm 65mm to 600mm	- - - 600mm>
Alpha III	PSA MOB PF2 PS/SPU	RLG, RMG, DRF TorLock, Diamond FDEB 4 & FDEB 6 FDEB 30 & FDEB 38	- - - -	600mm to 1200mm* 600mm to 1200mm* 600mm to 1200mm* 600mm to 1200mm*

\* Others available on request

- The above information is based on the use of standard pedestals. Finished floor heights outside the ranges shown are available using non-standard pedestals.
- The requirement for stringers shown is based on structural performance. The use of stringers is dependant on not only the finished floor height but also the structural requirements along with individual project requirements.
- The use of DRF600 and FDEB 38 as extra heavy grade raised floor systems will require the use of bolt-on stringers regardless of the finished floor height.
- Snap-on stringers will provide additional lateral stability whereas bolt-on stringers will provide additional structural performance in addition to increase lateral stability.
- Where there is a requirement for zinc whisker free pedestals these are available on request.



### Ramp Pedestals

Available on request.

