

CI/SfB

(33.1) x

SEPTEMBER 2010

Raised Access Flooring Solutions



deVar

Devar Raised Access Flooring

Our integrated approach to raised access flooring has ensured that we are the first choice with architects, developers and end users to meet their particular needs.

Devar's trading history in the provision of flooring solutions started in 1978 from our operating base in Glasgow, Scotland.

Working in partnership with contractors, specifiers, architects and direct clients, we have provided commercial flooring for a host of customers throughout the UK.

Our reputation has been built on an integrated approach, examining the specific needs of each project and choosing the best flooring solution to suit. With an absolute commitment to delivery on time and on budget, we instill confidence in our customers by insisting on the highest quality and performance at every stage.

Our raised access flooring division builds upon the existing Devar reputation and now offers specifiers a new option:

A high quality access floor system at a cost effective price.

We have invested in securing our own manufacturing facility to produce a new 'Devar' access flooring system which has already been implemented successfully on high calibre projects in South East Asia.

We have the skills and capability in product manufacturing and have the detailed knowledge required to ensure a quality installation. We always deliver on budget.

If you would like an informal discussion on how you can upgrade your flooring project without upgrading the cost, please contact:

Technical Services Team,
Email: enquiries@devargroup.com

or

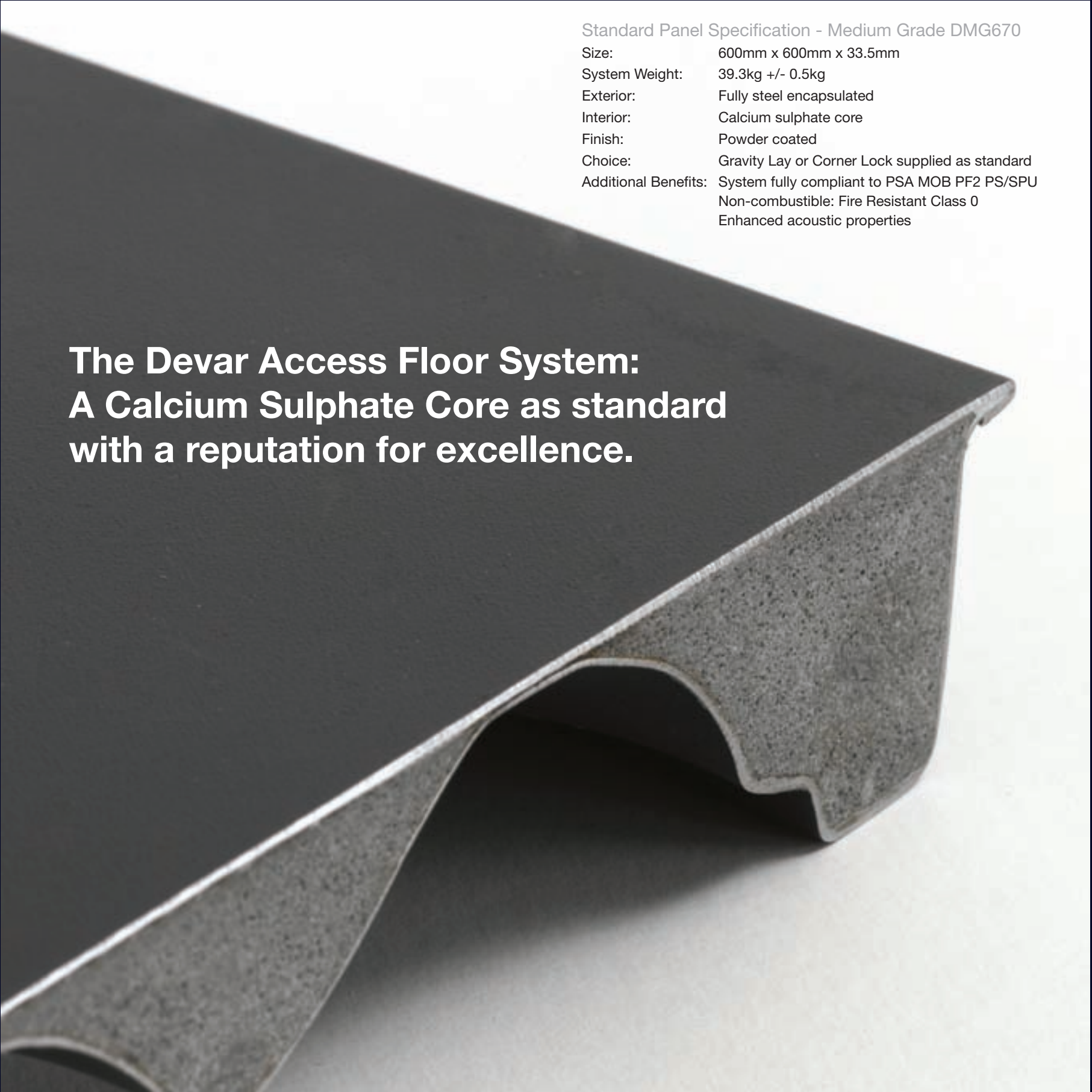
Stephan Leonard,
General Manager,
Devar Access Flooring
Tel: +44 (0)141 638 2203
Email: sleonard@devargroup.com

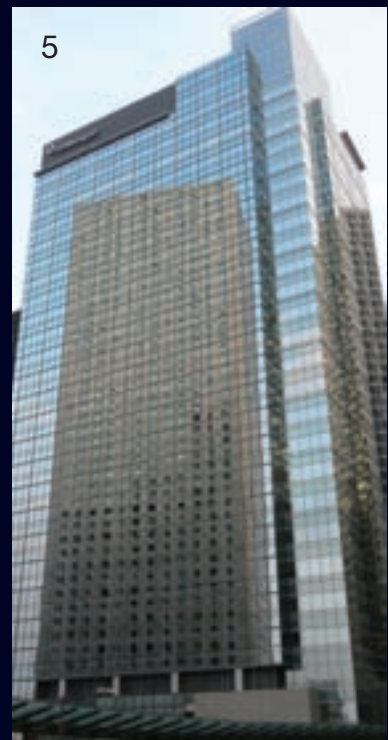


Standard Panel Specification - Medium Grade DMG670

Size:	600mm x 600mm x 33.5mm
System Weight:	39.3kg +/- 0.5kg
Exterior:	Fully steel encapsulated
Interior:	Calcium sulphate core
Finish:	Powder coated
Choice:	Gravity Lay or Corner Lock supplied as standard
Additional Benefits:	System fully compliant to PSA MOB PF2 PS/SPU Non-combustible: Fire Resistant Class 0 Enhanced acoustic properties

**The Devar Access Floor System:
A Calcium Sulphate Core as standard
with a reputation for excellence.**





Projects

1 2IFC, Hong Kong
LANDMARK OFFICE DEVELOPMENT
88 floors of commercial office accommodation
and trading floors
147,400m² of medium grade gravity lay calcium sulphate
system

2 Raffles Square, Shanghai
CUTTING EDGE DESIGN
49 floors of commercial office accommodation
87,000m² of medium grade corner lock calcium sulphate
system

3 China National Offshore Oil Corp., Beijing
HEADQUARTERS BUILDING
Building comprising commercial office accommodation
40,000m² of medium grade gravity lay calcium sulphate
system

4 Plaza 66, Shanghai
TWIN COMMERCIAL ICONS
Two office towers of commercial office accommodation
120,000m² of medium grade corner lock calcium
sulphate system

5 JP Morgan Centre, Hong Kong
HEADQUARTERS, OFFICE & TRADING FLOORS
Large floor plates of commercial office accommodation
38,000m² of medium grade corner lock calcium sulphate
system

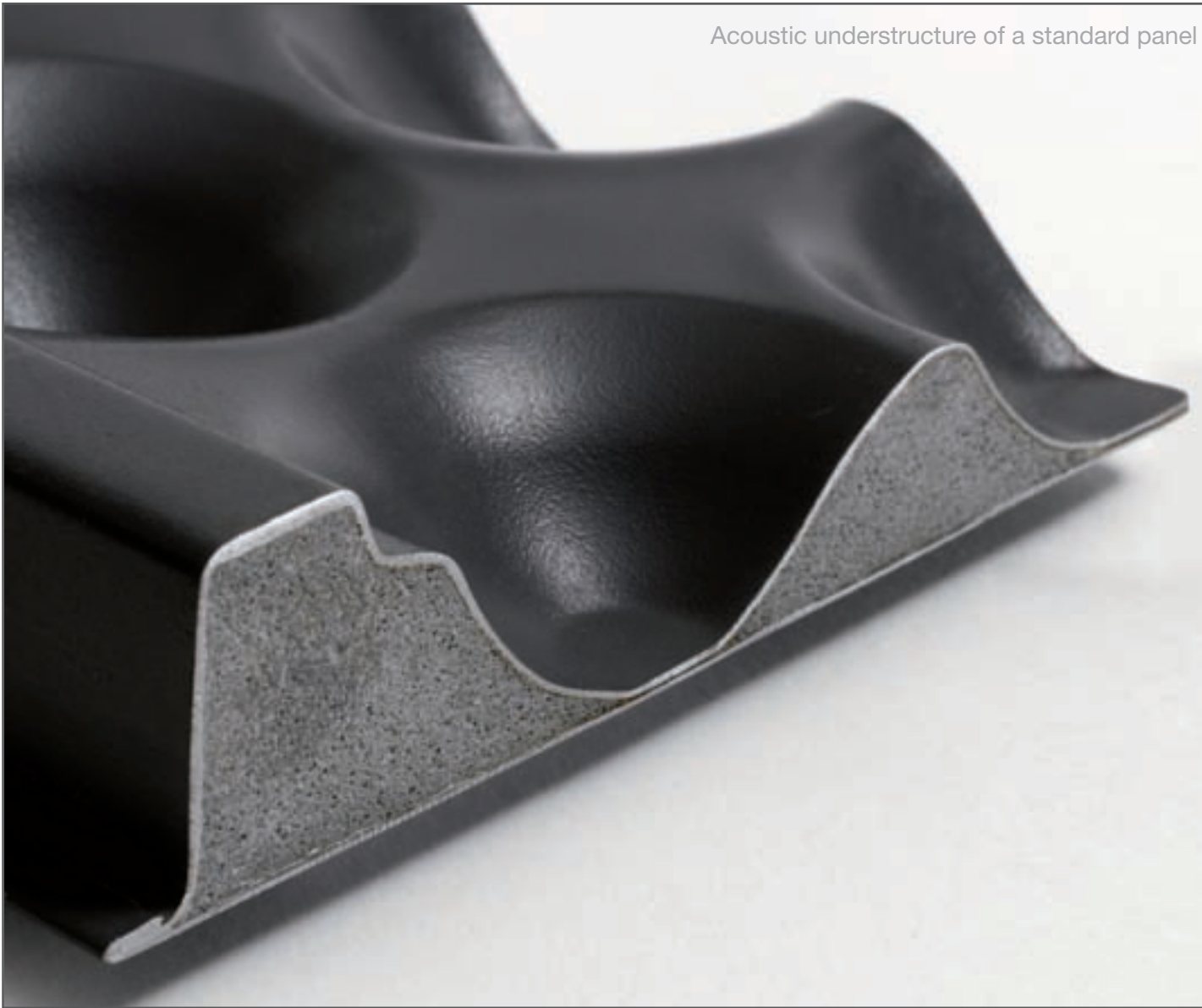
6 Cambridge House, Hong Kong
RAISING STANDARDS IN THE BUSINESS DISTRICT
36 floors of commercial office accommodation
18,000m² of medium grade gravity lay calcium sulphate
system

7 LG Mansion, Beijing
FINANCIAL SERVICES HUB
Two office towers totalling 60 floors of commercial office
accommodation.
118,000m² of medium grade corner lock calcium
sulphate system

8 Grand Gateway Plaza, Shanghai
LIGHTING UP THE FINANCIAL DISTRICT
52 floors of commercial office accommodation
95,000m² of medium grade corner lock calcium
sulphate system



Acoustic understructure of a standard panel



The benefits of using a Calcium Sulphate Panel

STABLE

Less susceptible to fluctuations in humidity & temperature

SAFE

Non-combustible:
Fire Resistant
Class 0

ENVIRONMENTAL

No timber or
VOC's used in the
manufacturing process

Calcium Sulphate Panels

Certified Raised Access Floor Systems

Fully Compliant to PSA MOB PF2 PS/SPU and BS EN 12825:2001 standards

Unlike most other manufacturers, Devar use a calcium sulphate core as standard in the manufacture of their floor panels and not only in their heavy duty ranges.

General Information

Devar's calcium sulphate panel has become the preferred choice for architects, specifiers and end users due to its enhanced performance characteristics compared to a standard wood core panel.

The calcium sulphate core is inherently less susceptible to fluctuations in humidity and temperature than a wood core product. This assists with on-site installation programming and therefore offers greater flexibility.

The corner lock panel system provides maximum lateral stability at higher floor heights.

Covering Options

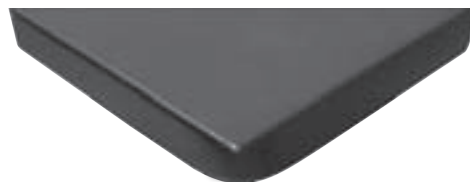
- Standard finish: Powder coated steel
- Integral HPL, PVC or carpet finishes are available, utilising all of the world's top flooring brands

Benefits

- Exceptionally high rolling load capacity
- Improved acoustic properties
- Non-combustible: Fire Resistant Class 0
- Suitable for areas with high humidity and other specialist applications
- Complies with IEE Regulations (17th Edition)
- Oversize panels available for perimeter details
- Four sides are protected by edge trim
- No volatile organic compounds (VOC's) used
- Exceeds PSA MOB PF2 PS/SPU specification standards

Recommended Applications

- Light Duty - General office areas
- Medium Duty - High density / populated office commercial areas
- Heavy Duty - Plant rooms, server rooms
- Extra Heavy - Specialist applications and exceptionally heavy equipment requirements



GRAVITY LAY
WITHOUT HOLES



CORNER LOCK
WITH HOLES

Both available as standard

Pedestals

Unique Devar design for our 600mm x 600mm x 33.5mm Panel Systems

Pedestal Fixing

All pedestals are normally adhered to the subfloor with our own proprietary epoxy adhesive ensuring complete system compatibility and performance. They can also be mechanically fixed to the subfloor. Full details of these different options are available upon request from our Technical Services Team.

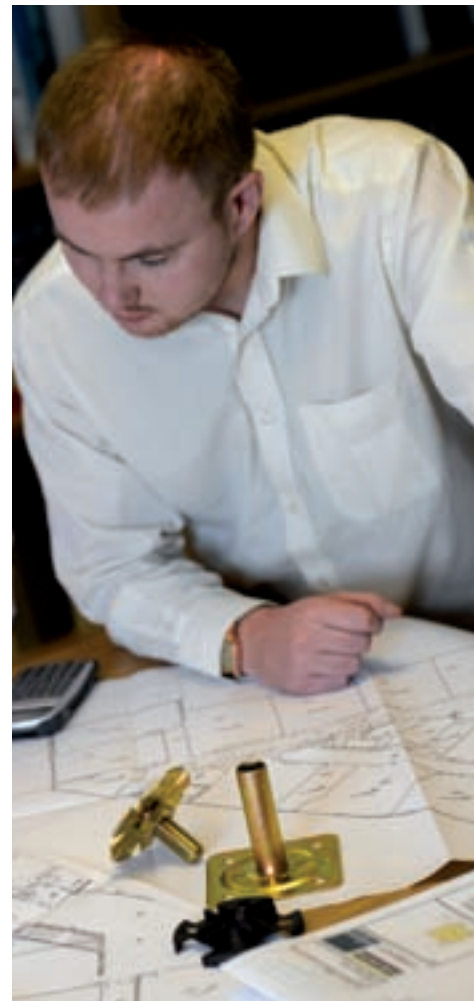
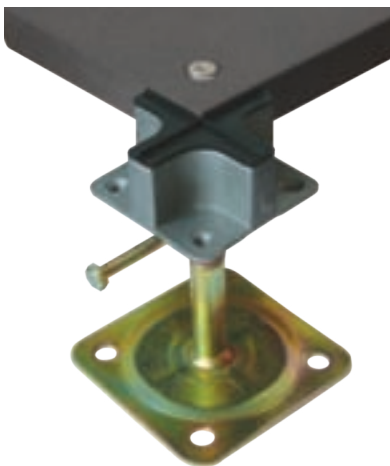
Genesis 1 Pedestal

- Used in standard installations
- 100mm x 100mm x 2.5mm base plate
- M16 screw lock nut with secure engagement channels
- Projection welded steel



Genesis 2 Pedestal

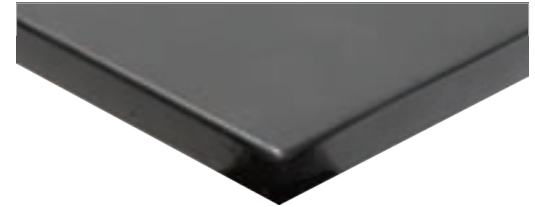
- Used in low profile floor installations
- 100mm x 100mm x 2.5mm base plate
- Die-cast aluminium head



Stringers, Gaskets & Accessories

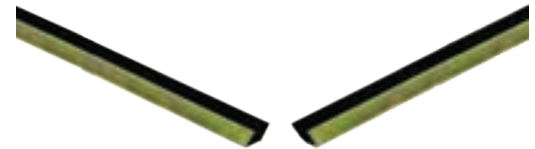
Snap-on Stringer

A cost-effective solution for further increasing rigidity in light/medium grade systems for use in exceptionally highly populated areas.



Bolt-on Stringer

- Increases system rigidity.
- For use with extra heavy grade panels.
- 600mm long and made from galvanised steel.
- Screwed to the pedestal heads for enhanced structural performance.



Gasket

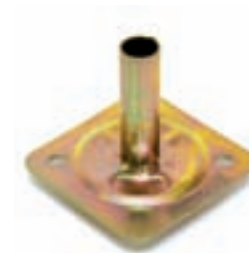
- Injection moulded and manufactured using conductive material.
- Double vertical spines to allow secure panel engagement.
- Corner lock holes for screw fixing.



Accessories

A full range of accessories are also available for use with our system including:

- steps
- ramps
- cavity barriers
- fire barriers
- lifting devices
- bridging sections
- edge trims
- electrical outlet boxes
- grommets
- air grilles



HPL/ESD PVC Covered Panels

These panels help to reduce the static electricity generated by computers and other electrical equipment thus improving their performance and lifespan. As a result, our system is frequently specified for computer rooms where a strictly controlled environment is critical.

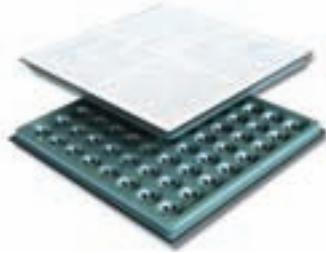
Devar's HPL/ESD PVC covered panels can be installed directly onto a rigid network system of pedestals and stringers. The panels are manufactured to exact tolerances allowing them to be freely interchanged. Devar's system can incorporate a variety of outlet boxes which facilitate comprehensive wiring configurations to optimise cabling within computer rooms.

HPL/ESD PVC covered panels with exceptional anti-static qualities

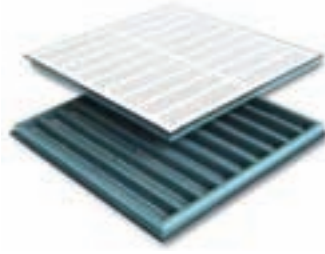
Perforated HPL/ESD PVC panels



DEVAR PERFORATED PANEL 1
With Damper

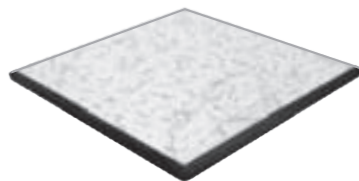


DEVAR PERFORATED PANEL 2
Without Damper

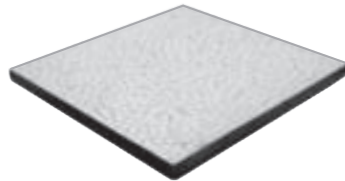


DEVAR PERFORATED PANEL 3
Without Damper

Non-perforated HPL/ESD PVC panels



DEVAR NON-PERFORATED PANEL 4



DEVAR NON-PERFORATED PANEL 5



A wide range of colour options is available.

Quality Assurance

Quality

At Devar we always insist on delivering the highest quality of product and service levels to all our clients. Having experienced this, our customers return to us time and time again.

We are proud of our first class reputation. You can be assured that this attention to detail and commitment continues throughout all of our processes.

Manufacturing

Our system is constructed to the highest standards and strictest tolerances of quality control in our impressive manufacturing facility.

Testing

Our system is tested and certified by SGS: the world's largest body for inspection and testing. It is also tested by Building Testing Limited (BTL) who are a prominent independent UKAS accredited testing house.

This ensures that the testing, assessment and certification criteria utilised meets all the relevant quality, safety and performance standards demanded by our clients.

Compliance

Our system is fully compliant with, and indeed exceeds, the performance parameters stipulated by the industry standard for performance and suitability: PSA MOB PF2 PS/SPU

Testing & Certification

Full PSA MOB PF2 PS/SPU standard testing by BTL and SGS.

Full certification data available upon request or on our website.

Guarantee

Our system is guaranteed for 25 years.



After sales

Full after-sales technical support team at your disposal for the lifetime of the installation.

Cost Affordability

Manufacturing efficiencies ensure that our calcium sulphate panel is highly cost effective when compared to standard wood core systems from other manufacturers.

Safety

Non-combustible: Fire Resistant Class 0

Environment

No timber product or volatile organic compounds (VOC's) are used in the manufacturing process.

Performance

Excellent acoustic qualities. The rigid construction helps eliminate noise generated from the surroundings, creating a perfect working environment. The concave shape of the understructure further enhances the excellent acoustic performance.



Performance

The following test results were achieved by our system as tested and certified by both BTL and SGS based on our DMG 670 Medium Grade Panel and Genesis 1 Pedestal. These results were achieved when tested to comply with PSA MOB PF2 PS/SPU. All testing data and certification is available on request and can also be viewed at www.devargroup.com

TEST REFERENCE NUMBER	TEST PARAMETERS	RESULT
T1.00	Concavity and Convexity	PASS
T2.00	Twist	PASS
T3.00	Panel squareness	PASS
T4.00	Pull off strength of panel edge strip	N/A
T5.00	Free play in pedestal	PASS
T6.00	Air leakage rate	0.32 l/s.m ² @ 25 Pa
T7.00	300mm square loading	PASS
T8.00	25mm square point loading	PASS
T8a.00	25mm square point loading on perimeter cut panel	PASS
T9.00	Four point loading	N/A
T10.00	Uniformly distributed load	PASS
T11.00	Safety factor	PASS
T12.00	Soft body impact	PASS
T13.00	Hard body impact	PASS
T14.00	Pedestrian dynamic load	PASS
T15.00	Pedestal strength – horizontal load	PASS
T16.00	Pedestal strength – vertical load	PASS
T17.00	Effect of temperature	PASS
T18.00	Effect of humidity	PASS
T19.00	Determination of surface spread of flame and index of performance	PASS
T20.00	Small scale fire test	PASS
T20a.00	Thermal properties	PASS

CONCLUSION

Our individual panels and pedestals meet all the required standards for performance and safety. More importantly, our complete system is fully compliant with the PSA MOB PF2 PS/SPU standard. This is your guarantee of peace of mind in specifying our product for your projects.

Specification

DIMENSIONS	600mm x 600mm x 33.5mm	INTERIOR	Calcium Sulphate Core
EXTERIOR	Fully Steel Encapsulated	FINISH	Powder Coated

TYPE	AREA OF USE	SYSTEM WEIGHT	PANEL SYSTEM		UNIFORMLY DISTRIBUTED LOAD		SAFETY FACTOR		OVER 25mm SQUARE		PANEL DEFLECTION AFTER 24 HOURS		PANEL SQUARENESS		CONCAVITY & CONVEXITY	
			Gravity Lay	Corner Lock	PSA Spec	Devar Spec	PSA Spec	Devar Spec	PSA Spec	Devar Spec	PSA Spec	Devar Spec	PSA Spec	Devar Spec	PSA Spec	Devar Spec
PANEL NUMBER	PSA Description	Total	Availability		kN/m ²	Load		kN	mm	%	mm					
LIGHT GRADE DLG580	General office areas with no heavy equipment	36.30	Yes	Yes	≥ 6.70	11.11	3 x load for 5 mins	✓	≥ 1.50	3.11	≥ 2.40	✓	≥ 0.06	✓	≥ 0.75	✓
MEDIUM GRADE DMG670	General office areas with heavy equipment	39.30	Yes	Yes	≥ 8.00	12.44	3 x load for 5 mins	✓	≥ 3.00	3.55	≥ 2.40	✓	≥ 0.06	✓	≥ 0.75	✓
HEAVY GRADE DHG760	Computer rooms, telecom switch rooms, etc	39.90	Yes	Yes	≥ 12.00	15.55	3 x load for 5 mins	✓	≥ 4.50	4.50	≥ 2.40	✓	≥ 0.06	✓	≥ 0.75	✓
EXTRA HEAVY GRADE DXL850	Specialist applications	44.60	Yes	Yes	≥ 12.00	17.78	3 x load for 5 mins	✓	≥ 4.50	5.55	≥ 2.40	✓	≥ 0.06	✓	≥ 0.75	✓

✓ = meets or exceeds standards

Delivery on Time - Everytime

Client List

Devar clients include:



RETAIL

Asda
B&Q
Boots
Brewers Fayre
Debenhams
Dobbies Garden Centres
Homebase
Marks & Spencer
McDonalds
Morrisons
Pizza Hut
Real Radio
Saga Radio
Scottish Power
Scottish & Southern Energy
Scottish Water
WH Smith

HOSPITALITY

Gleneagles Hotel
JD Wetherspoon
Old Course Hotel, St Andrews
Premier Inns
Radisson Hotels
SECC

EDUCATION

Glasgow University
Heriot Watt University
Stirling University
University of Strathclyde

PUBLIC SECTOR

BBC
DVLA
East Renfrewshire Council
Fife Council
Gallery of Modern Art
GHA
Glasgow City Chambers
Glasgow City Council
Highland Council
HMRC
Inverclyde Council
Mitchell Library
MOD
North Lanarkshire Council
Renfrewshire Council
Royal Mail
Scottish Courts Administration
Scottish Prison Service
South Lanarkshire Council

FINANCIAL SERVICES

American Express
Aviva
Clydesdale Bank
Esure
JP Morgan
Legal & General
Lloyds Banking Group
Nationwide
Prudential
RBS
RSA
Santander
Standard Life
Zurich

ELECTRONICS

IBM
JVC
Motorola
National Semi-Conductors
Siemens
Solectron
Sun Microsystems

SPORTS

Ayr Racecourse
Celtic FC
Kelvin Hall Sports Arena
Pollok Golf Club
Rangers FC
Scottish National Stadium, Hampden

COMMERCIAL

Arnold Clark
BAE Systems
Baker Tilly
BP
British Airports Authority
British Energy
BT
BUPA
Caterpillar
Daily Record & Sunday Mail
Johnson Controls
KPMG
RAC
Rolls Royce
Scottish Media Group
Sodexo
St Enoch Square, Glasgow
Unilever

HEALTHCARE

Ayrshire & Arran Health Board
Golden Jubilee National Hospital
Marie Curie Cancer Care
NHS Greater Glasgow & Clyde
Prince & Princess of Wales Hospice

CONSTRUCTION

Amec
Balfour Beatty
Bovis
CBRE
City Building (Glasgow) LLP
Dawn Construction
ESA McIntosh
FES FM
Havelock Europa
Kier
Laing O'Rourke
Miller Construction
Morgan Ashurst
Pihl
Sir Robert McAlpine
Skanska





DEVAR ACCESS FLOORING

GLASGOW

Spiersbridge Business Park
Thornliebank
Glasgow G46 8NL
Scotland
United Kingdom

Tel: +44 (0) 141 638 2203

Fax: +44 (0) 141 620 0207

LONDON

Office 404, 4th Floor
Albany House
324 / 326 Regent Street
London W1B 3HH
United Kingdom

Tel: +44 (0) 20 7692 4016

Fax: +44 (0) 20 7692 4017

HONG KONG

Level 19
2 IFC
8 Finance Street
Central
Hong Kong

Tel: +852 2251 8681

Fax: +852 2251 1618

SHANGHAI

Level 23
Citigroup Tower
33 Huayuanshiqiao Road
Shanghai 200120
China

Tel: +86 21 6101 0342

Fax: +86 21 6101 0343

www.devargroup.com

Email: enquiries@devargroup.com



revive⁷⁵

Printed on Revive 75 special silk
which contains 75% recycled fibre
and is FSC certified.